



TECHNICAL DATA

MODEL: KP-DS250

DIESEL GENERATING SET

KPS POWER VIETNAM

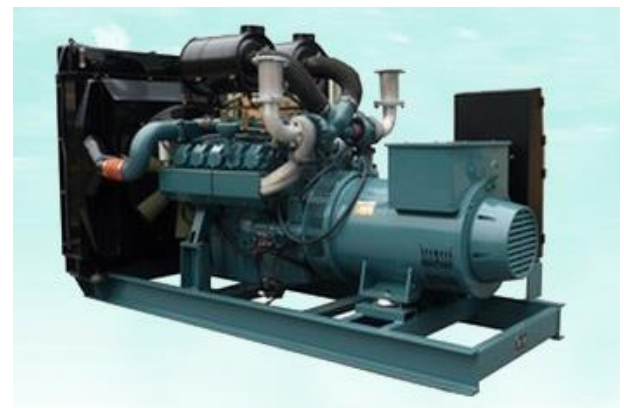
50HZ

KP-DS250-SR / KP-DS250-OE

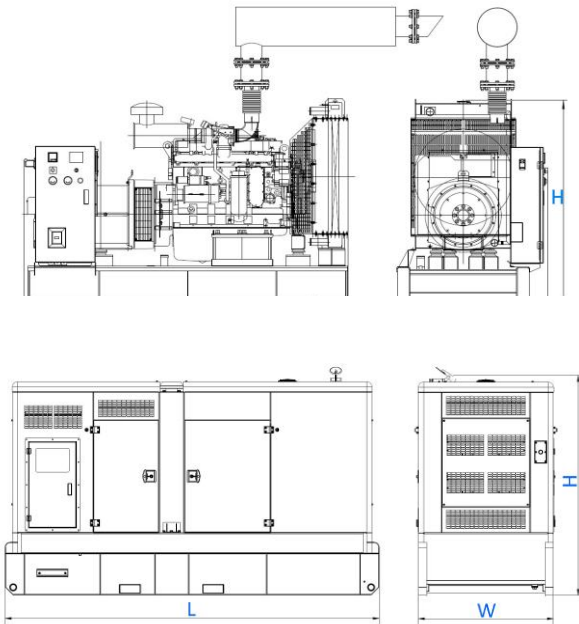
Features

- Compact structure high-strength chassis
- Easy operation and maintenance, Low cost
- Good performance damping system
- Compliance with international electrical safety standards of electrical system
- 8 hours base tank
- High-performance maintenance-free batteries with isolation switch
- 50°C radiator
- Top lifting, Forklift bottom hole design, easy to transport
- Industrial type muffler
- Noise reduction structure , Low overall noise
- Convenient power output interface and ATS Interface
- IP56 (control system)
- The personalized design for user
- Structure type genset Optional: Open (KP-DS250-OE)

Reference images, the actual shall prevail



Sound-proof (KP-DS250-SR)



Genset Technical Data

Output frequency	50 HZ
Rated speed	1500 rpm
Prime power	250KVA
Standby power	275KVA
Rated voltage	400 V
Phase	3
Noise dB(A) @7m	80
Engine model	P126TI
Alternator model	KP274K
Fuel consumption of 100% load	58.1 Litres/h
Fuel consumption of 110% load	66.2 Litres/h
Voltage regulation rate	≤±1%
Random voltage variation	≤±1%
Frequency regulation rate	≤±5%
Random frequency variation	≤±0.5%

Dimension and Weight

Generating set model	KP-DS250-OE	KP-DS250-SR
Length(L) (mm)	3000	3900
Width(W) (mm)	1300	1400
Height(H) (mm)	1500	2000
Dry weight (k g)	2700	3350
Tank capacity (L)	700	700

Engine Specifications

Engine model	P126TI
Engine manufacturer	DOOSAN
Number of cylinders	6
Cylinder arrangement	In line
Cycle	Four stroke
Aspiration	Turbocharged & Intercooled(air to air)
Bore x Stroke (mm x mm)	123 x 155
Displacement (Liter)	11.051
Compression Ratio	17.1:1
Prime power/speed (kW/RPM)	241 KW / 1500rpm
Standby power/speed (kW/RPM)	272 KW / 1500rpm
Speed governor	Electrical
Cooling system	Forced Water Cooling Cycle
Steady speed droop (%)	≤1%
Total lubrication system capacity (L)	44L
Coolant capacity (L)	51L
Fuel consumption at 100% load (g/kWh)	196g/kwh
Starter motor	DC24V
Alternator	DC24V

Alternator Specifications

Rated frequency	50 Hz
Rated speed	1500 rpm
Alternator model	KP274K (KPS brand)
Rated output prime power	250KVA
Efficiency (%)	96%
Phase	3
Rated voltage	400 V
Exciter type	Self excited, Brushless
Power factor	0.8
Voltage adjust range	≥5.0%
Voltage regulation NL-FL	≤±1.0%
Insulation grade	H
Protection grade	IP23
Xd DIR. AXIS SYNCHRONOUS	1.50
X'd DIR. AXIS TRANSIENT	0.15
X''d DIR. AXIS SUBTRANSIENT	0.10
Xq QUAD. AXIS REACTANCE	0.72
X''q QUAD. AXIS SUBTRANSIENT	0.16

Optional			
Optional Alternator brand			
Optional Alternator model			
Exciter type			
Rated output prime power			

Control System

NSM-160-3110 (Standard)

All KPS Gensets have a control cabinet (the Deepsea control module DSE3110 as standard) mounted on isolated support.

Main Features

- Manual and automatic mode
- Parameter configuration via USB interface
- Remote control automatic start/shutdown
- Optional ECU control
- Optional CAN engines
- Optional speed sensor access
- Operating temperature: -30°C to 70°C
- IP56 Rating
- Back-lit icon LCD display
- Power Save mode
- CAN and Magnetic Pick-up/Alt. versions available (specify on ordering)
- PC configurable
- 6 Digital inputs
- 4 Outputs (2 configurable on Magnetic Pick up/Alt., 4 configurable on CAN version)

The control module display

- Generator voltage
- Generator frequency
- Battery voltage
- Engine speed
- Load current (Panel Meter)
- Engine run-time Hours
- Engine oil pressure (Panel Meter)
- Engine coolant temperature (Panel Meter)



Protecting Functions

- Over frequency / under frequency
- Over voltage / under voltage
- Over speed / under speed
- Over current
- Emergency stop
- Low oil pressure
- High water temperature
- Failure to start / Failure to stop
- Battery charger failure
- Comprehensive shutdown or warning on fault condition

Control System

NSM-160-7320/6020 (Optional)

NSM-30-7320 is an advanced control module based on micro-processor, It is an Auto Mains (Utility) Failure Control Module(AMF), have been designed to start and stop generating sets that include electronic And non-electronic engines. Include the additional capability of being able to monitor a mains (utility) supply. when main is not available, It can automatically start the engine and close generating sets breaker automatically, Accurately measure various operational parameters and display all values and alarms information on the LCD. In additional, it can automatically open breaker, and shutdown the engine after the main supply recovers.

Main Features

- AMF and ATS and communication and expansion function
- Designed to work with electronic or non-electronic or gas engine simultaneously. (support many kinds of engines ECU).
- Manual, Automatic, Test and remote control mode selectable.
- Monitoring and measuring operational parameters of the mains supply and genset.
- Indicating operation status, fault conditions, all parameters and alarms
- Multiple protections and multiple parameters display.
- Includes 12 inputs and 8 outputs. 8 inputs are configurable and 6 outputs are configurable.
- Can be programmed using the front panel or by using the PC software.
- Support twelve languages. The language was edited by customer.
- Graded protection: pre-alarm, shutdown and electrical trip, flexible setting.
- The module can be pre-set for four operating modes and protecting parameters.
- Add DSE890 module, internet network monitoring can be realized.
- The firmware can be updated automatically, so customer can have the latest version.



The control module display

- Generator voltage
- Generator frequency
- Battery voltage
- Engine speed
- Load current
- Generator KVA, KW, PF
- Engine run-time Hours
- Engine oil pressure
- Engine coolant temperature
- Real time clock for time and date, overall runtime

Optional

Engine

- Water Jacket Preheater
- Fuel-water separator
- Oil pump
- Oil preheater
- Battery preheater

Alternator

- PMG excitation
- Space heater
- Winding Temperature Measuring

Generator Set

- Tools with the machine
- Coolant (-30°C)

Control System

- AMF function
- ATS control cabinet
- Double-frequency and double voltage
- Single phase
- ABB MCCB

Fuel System

- 12 / 24 hour base tank (single wall)
- Dual wall base fuel tank
- Outside fuel tank
- Automatic fuel feeding
- Fuel level indicate

Canopy

- Hired type
- Economy Oil heater
- Trailer

Contact Us

KPS POWER VIETNAM

Manufacture: 44/17 Quang Phat, Quang Tien, Trang Bom Dist, Dong Nai, Vietnam

Tel: 0251 - 6 55 39 55 Hotline: 094 232 55 22

HCM Branch: 40 Binh Phu St., Tam Phu Ward, Thu Duc Dist, HCMC, Vietnam

Tel: 028 – 6683 7858 Hotline: 0916 432 5590

Hanoi Branch: 30 Dai Tu St., Dai Kim Ward, Hoang Mai Dist, HCMC, Vietnam

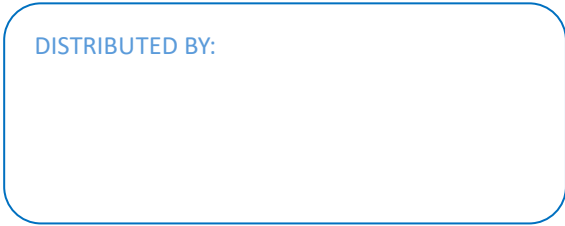
Tel: 024 – 6253 7450 Hotline: 0968 066 805

Email: info@kpspower.vn

Website: www.kpspower.vn

KPS reserves the right to make changes in model, technical specification, color, configuration and accessories without prior notice. Please contact the salesman before ordering.

DISTRIBUTED BY:



© 2016 by KPS, All right reserved.